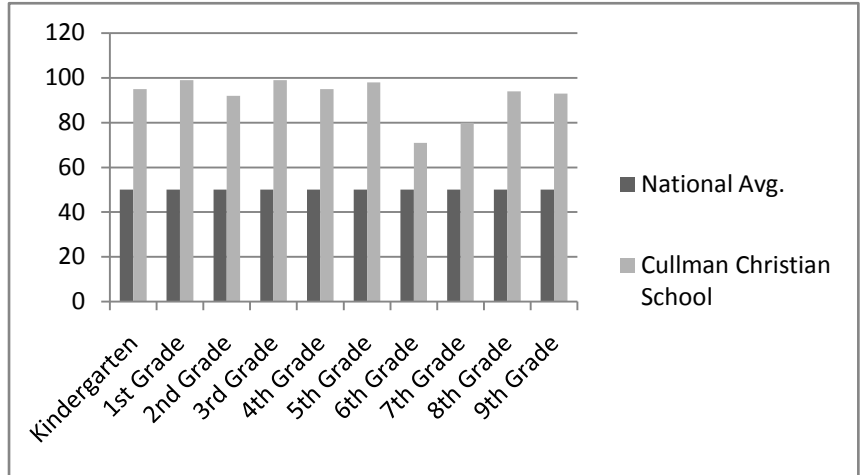


Cullman Christian School Excels in 2009 SAT Results



Pictured left to right: Roger Hood, Administrator; Jill Perry, Student Services Director; Tina Warner, School Board President celebrating CCS's success in the 2009 SAT test results.



This Group Report describes the performance of CCS students compared with students of the same grade in schools across the nation. Our school scored in the upper range, which means performance was well above average.

The entire student body (K- 9) averaged in the 92 percentile on the complete battery of the 2009 SAT test.